

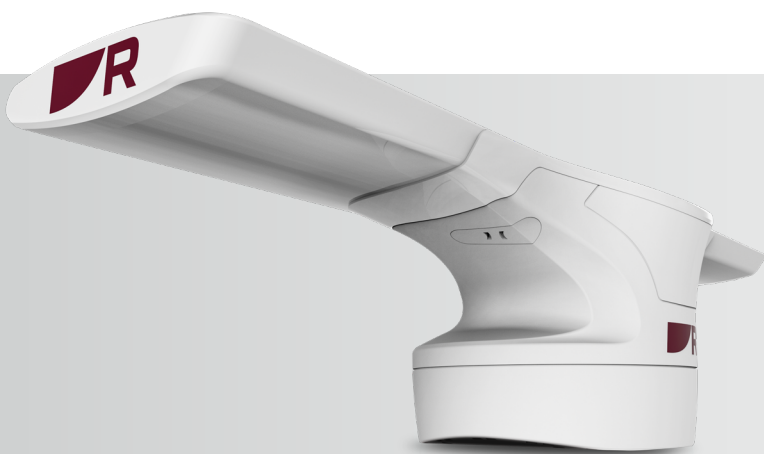
# CYCLONE

## SOLID STATE OPEN ARRAY RADAR

The ultimate expression of design, rugged performance, and unmatched situational awareness, Cyclone solid-state open-array radars give mariners the confidence to tackle the harshest conditions, gain the upper hand in the hunt for fish, and navigate busy waterways with confidence.

Cyclone radars are available with a 3, 4 or 6-foot antenna array and two high-power output options.

Cyclone radars deliver superior target separation and long-range resolution using CHIRP pulse compression and Raymarine beam sharpening technology. Each model features innovative detection capabilities, including Cyclone Bird Mode, RangeFusion™ technology and high speed 60 rpm imaging.



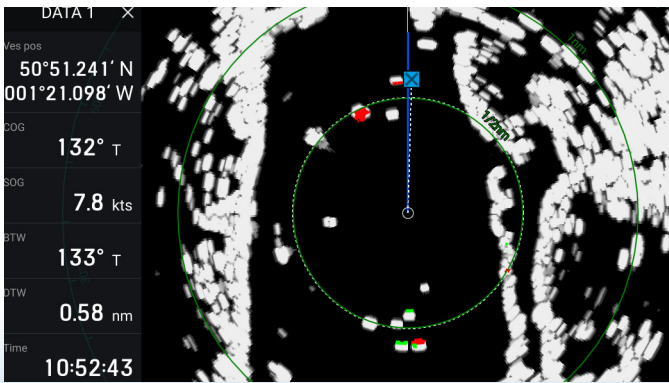
## CUTTING EDGE DESIGN

- Aircraft-wing-inspired design is engineered for extremes with best-in-class 100-knot wind rating and designed to meet the commercial grade IEC 62388 standard for ship borne radar
- At 13.1 inches (335 mm) tall, Cyclone's lower profile allows greater flexibility of boat architecture and more adaptable installation options.
- Innovative pedestal design conceals cable connections for a cleaner installation

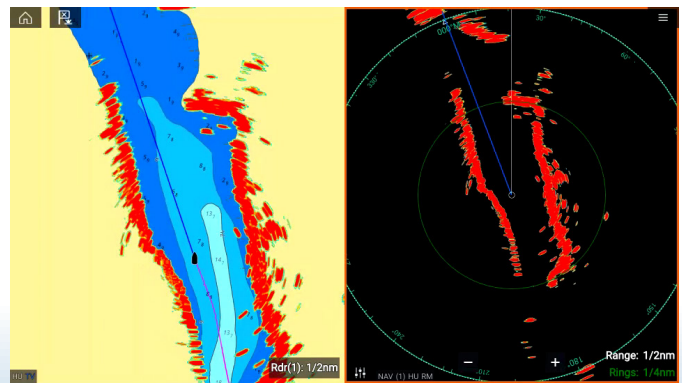
**Raymarine®**

## THE ULTIMATE SITUATIONAL AWARENESS

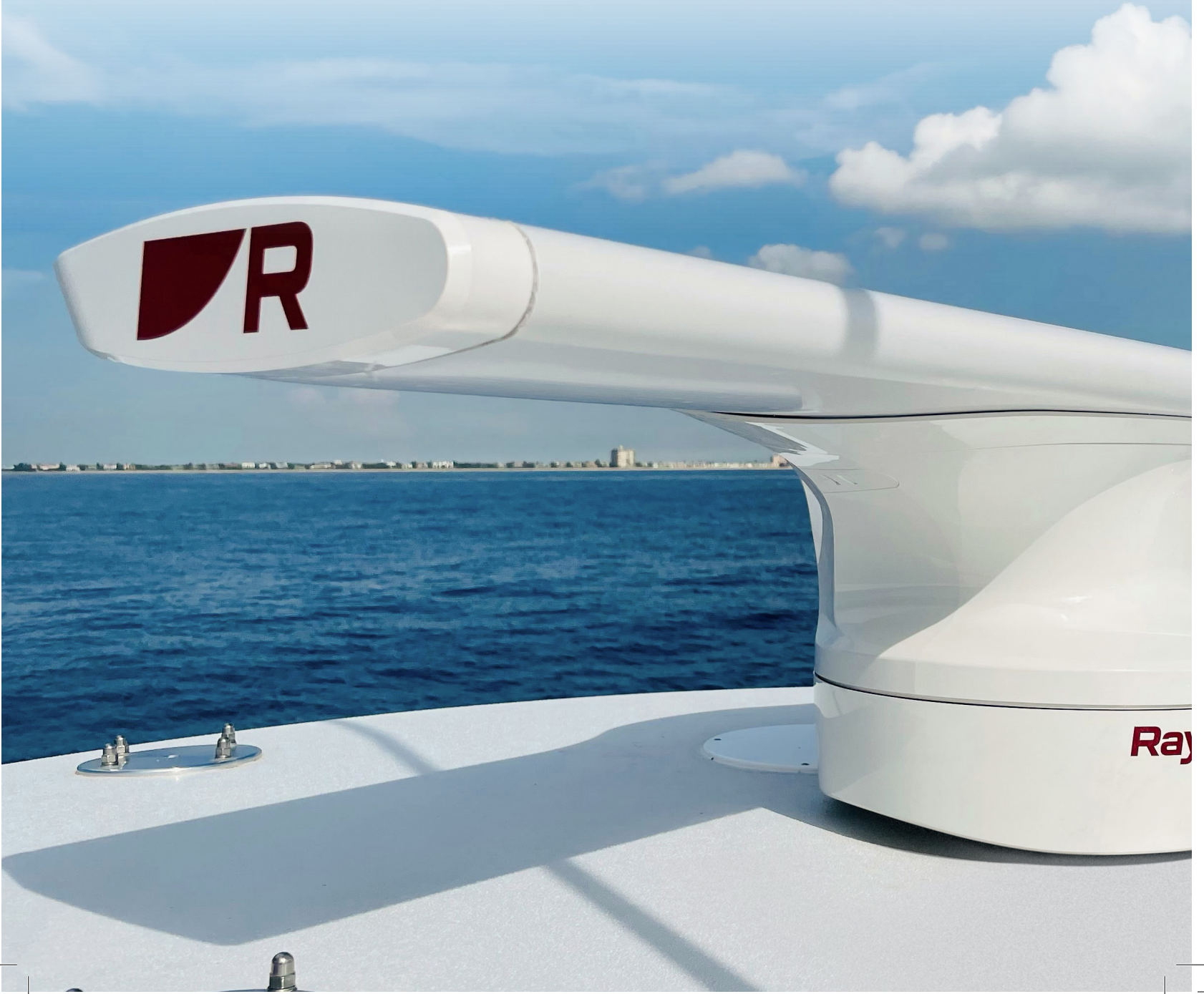
- Fast 60 RPM rotational speed delivers 360 degrees of awareness and accurate target tracks in real-time
- Doppler target tracking simplifies the interpretation of dangerous and safe targets for added safety.
- Professional grade ARPA target tracking. Cyclone automatically tracks up to 50 targets using the same advanced ARPA technology trusted by the United States Coast Guard.



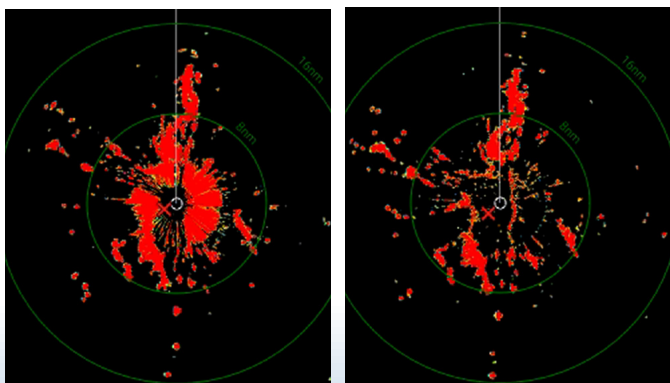
Doppler Target Tracking



Precise shore line detail and long range target separation



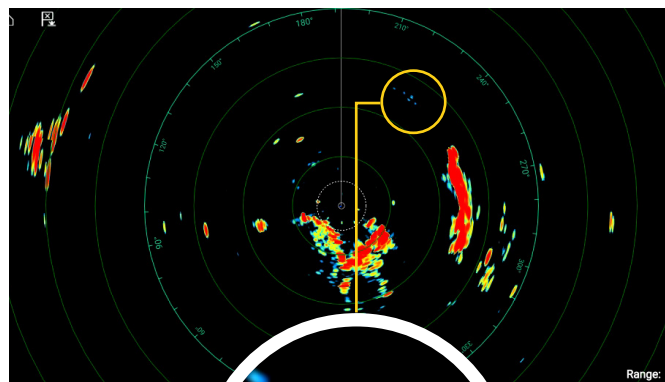
- RangeFusion™ technology combines short and long pulses into the single high clarity radar image, delivering exceptional short-range and long-range targets simultaneously.



RangeFusion combines short and long pulses into single image

## FISHING INTELLIGENCE

- Performance tuned for locating sea birds
- Enhanced Cyclone Bird Mode using CHIRP pulse compression technology



Cyclone intelligently optimizes gain and tune settings for imaging distant sea birds

## 3, 4 AND 6- FOOT OPEN ARRAY SIZES

- 4 and 6 foot options deliver superior target separation and range detections
- 3 foot array provides open array performance in tight spaces



3ft Option



4ft Option



6ft Option



## CYCLONE MODEL LINE UP

High power solid-state options for longer ranges and all-weather performance. Two levels of Cyclone performance to choose from



	<b>CYCLONE</b> 55 Watt (6kW Magnetron equivalent)	<b>CYCLONE PRO</b> 110 Watt (12 kW Magnetron equivalent)	
<b>Supply voltage (Using VCM100)</b>	Nominal: 12 V dc or 24 V dc / Minimum: 10.2 V dc / Maximum: 31.2 V dc		
<b>Power consumption (typical)</b>	70 W	95 W	
<b>Power consumption (max)</b>	170 W	195 W	
<b>Power consumption (standby)</b>	28 W	28 W	
<b>Maximum range scale</b>	72 Nm	96 Nm	
<b>Boot up time</b>	40 seconds		
<b>Standby to transmit</b>	Less than 5 seconds		
<b>Waterproof rating</b>	IPX6		
<b>Operating temperature range</b>	-25°C to +55°C (-13°F to 131°F)		
<b>Humidity</b>	Up to 93% at 40°C (104°F)		
<b>Maximum wind speed</b>	100 Kts		
<b>Power connection</b>	1x Power connector		
<b>Data connection</b>	1x RayNet connector		
<b>Transmitter frequency</b>	9370, 9400, 9430 MHz (User Selectable)		
<b>Peak power output</b>	55 W	110 W	
<b>Receiver characteristic</b>	Linear		
<b>Receiver noise</b>	Less than 5 dB		
<b>Physical (Pedestal)</b>			
<b>Dimensions</b>	388 mm x 360 mm x 335 mm / 15.27 in x 14.17 in x 13.18 in (to the top of the antenna)		
<b>Weight</b>	16 Kg		
<b>Antenna</b>	<b>3ft</b>	<b>4ft</b>	<b>6ft</b>
<b>Beamwidth (vertical)</b>	25°	25°	25°
<b>Beamwidth (horizontal)</b>	2.83	1.99°	1.32°
<b>Polarization</b>	Horizontal		
<b>Rotation speed</b>	12, 24, 36, 48, 60 rpm		
<b>Physical (Antenna)</b>			
<b>Length</b>	1031 mm / 40.59 in	1336 mm / 52.59 in	1945 mm / 76.57 in
<b>Weight</b>	7 Kg / 15.4 lb	9 Kg / 19.84 lb	12 Kg / 26.45 lb



For further information including full product specifications, scan the QR code or go to our website [www.raymarine.com](http://www.raymarine.com)

21-1186-MAR / OCTOBER 2021 / V1.0

**Raymarine**

FIND YOUR SEA

RAYMARINE.COM